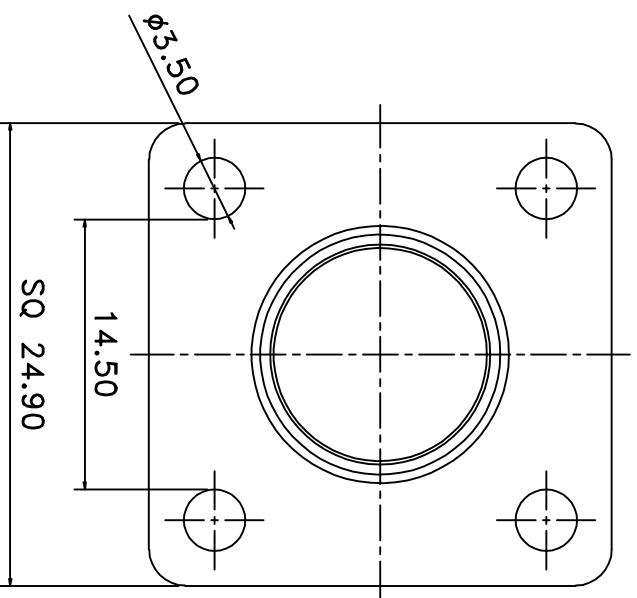
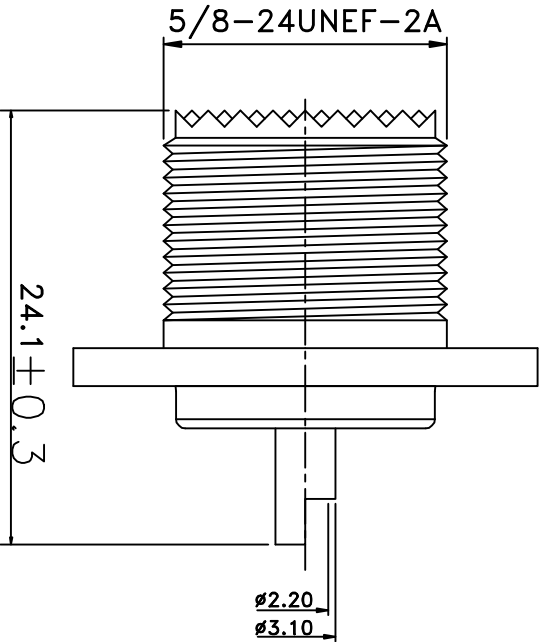


REV	DESCRIPTION	DRAWN	DATE



NO	Description	Qty	Material	Finish
3	DIELECTRIC(T-03010)	1	DELIRIN	NONE
2	PIN(C-03013)	1	BRASS	GOLD
1	BODY(B-03016-Z)	1	ZINC	NICKEL

<b>R&amp;D</b>			
* MAJOR DIMENSION		APPROVED	
UNLESS OTHERWISE NOTED TOLERANCES		CASH	
0.5-6=±0.2		CHECKED	
6-30=±0.4		LYDIA	
30-120=±0.6		DRAWN	
120-315=±1.0		PEN	
ANGLES=±1°		DRAWN DATE 04/10/12	
SCALE	4/1	UNIT	MM
TITLE			
UHF FEMALE SOLDER PANEL RECEPTACLE		DRAWING NO.	
UHF-1730-1-DGN		REV	
		A	