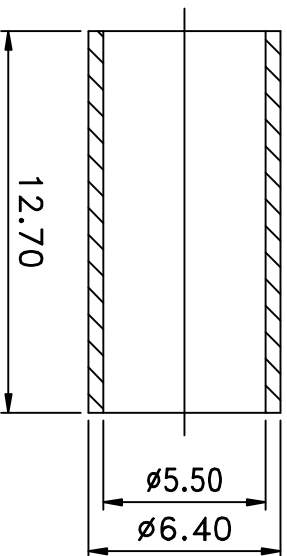
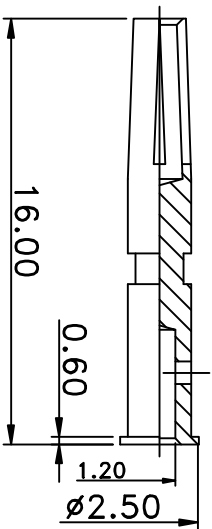
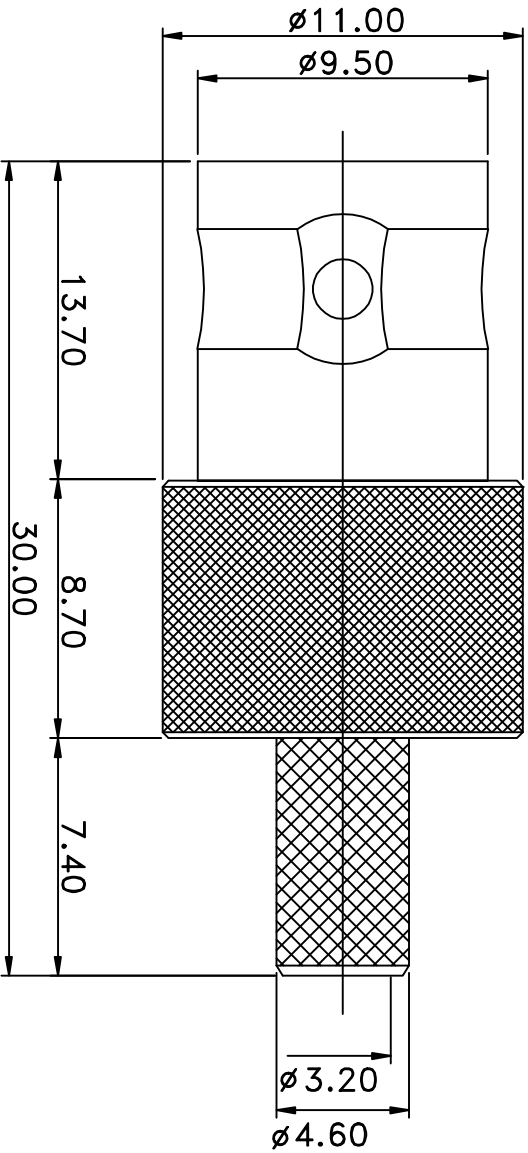


REV	DESCRIPTION	DRAWN	DATE



NO	Description	Qty	Material	Finish
5	Ferrule(F-010)	1	BRASS	NICKEL
4	Press fit washer(W-005)	1	BRASS	NICKEL
3	Dielectric(T-02017)	1	TEFLON	NONE
2	Pin(C-02026)	1	BRASS	GOLD
1	Body(B-02021)	1	BRASS	NICKEL

R&D		* MAJOR DIMENSION	
UNLESS OTHERWISE NOTED TOLERANCES		APPROVED	
0.5-6=±0.2		CASH	
6-30=±0.4		CHECKED	
30-120=±0.6		LYDIA	
120-315=±1.0		DRAWN	
ANGLES=±1°		PEN	
SCALE	4/1	UNIT	MM
DRAWN DATE 08/10/13		TITLE	
DRAWING NO. BNC-1311-4-F2-TGN		BNC FEMALE CRIMP TYPE	
REV		REV	
GL		A	

