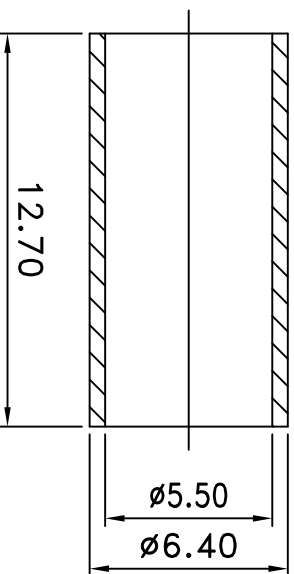
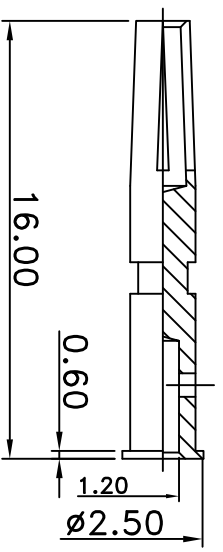
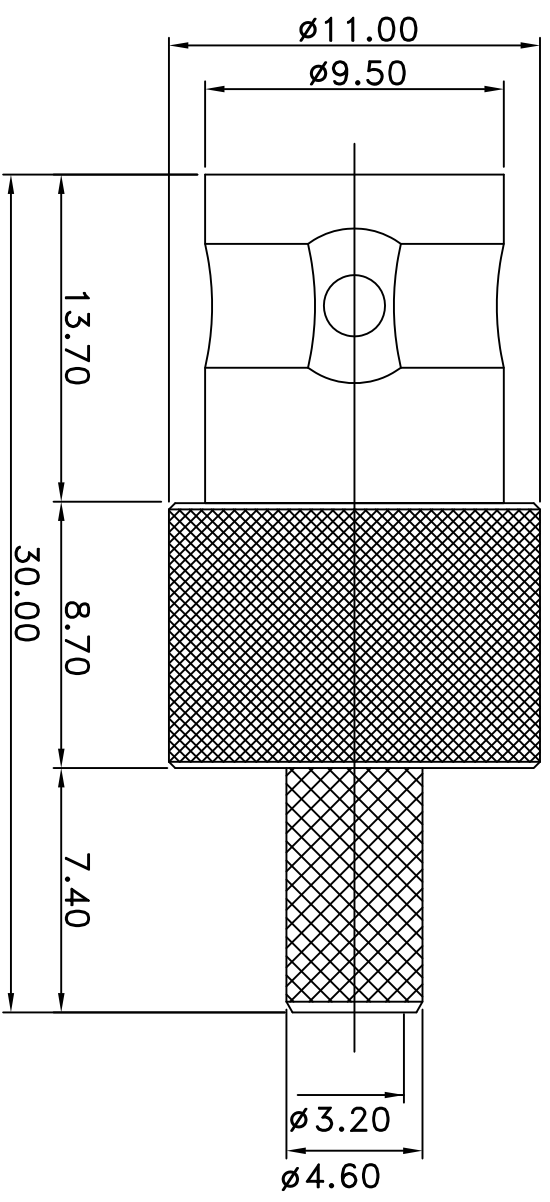
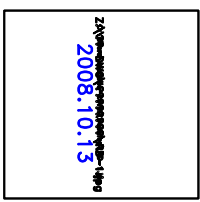


| REV | DESCRIPTION | DRAWN | DATE |
|-----|-------------|-------|------|
|     |             |       |      |
|     |             |       |      |



| NO | Description             | Qty | Material | Finish |
|----|-------------------------|-----|----------|--------|
| 5  | Ferrule(F-010)          | 1   | BRASS    | NICKEL |
| 4  | Press fit washer(W-005) | 1   | BRASS    | NICKEL |
| 3  | Dielectric(T-02017)     | 1   | TEFLON   | NONE   |
| 2  | Pin(C-02026)            | 1   | BRASS    | GOLD   |
| 1  | Body(B-02021)           | 1   | BRASS    | NICKEL |

|   |                       |
|---|-----------------------|
| <b>R&amp;D</b>  |                       |
|  |                       |
| * MAJOR DIMENSION   |                       |
| UNLESS OTHERWISE NOTED TOLERANCES   |                       |
| 0.5-6 = $\pm 0.2$   |                       |
| 6-30 = $\pm 0.4$  |                       |
| 30-120 = $\pm 0.6$  |                       |
| 120-315 = $\pm 1.0$   |                       |
| ANGLES = $\pm 1^\circ$  |                       |
| SCALE   | 4/1                   |
| UNIT  | MM                    |
| DRAWN   | PEN                   |
| CHECKED   | LYDIA                 |
| APPROVED  | CASH                  |
| DRAWN DATE  | 08/10/13              |
| TITLE   | BNC FEMALE CRIMP TYPE |
| DRAWING NO.   | BNC-1311-4-F2-TGN     |
| REV   | GL A                  |